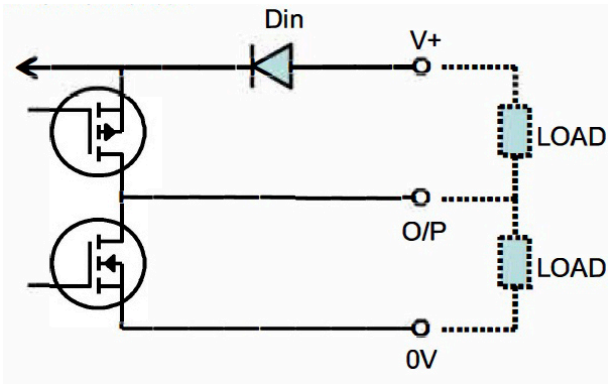


ITEM= -005

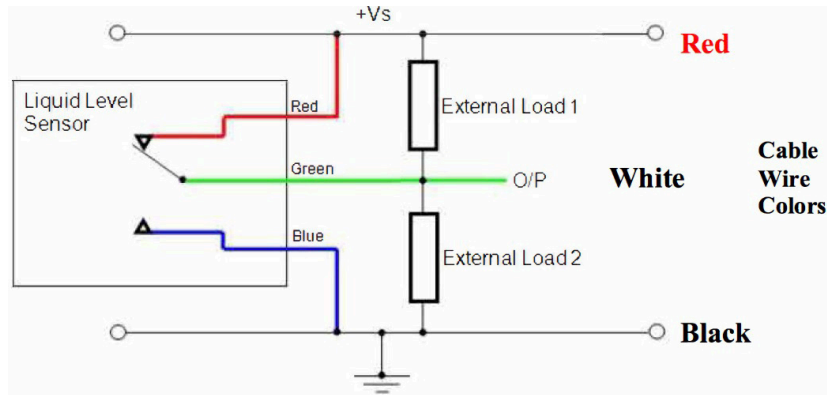
N & P-Channel Open Drain Push-Pull Output

To rest of LL Sensor circuit

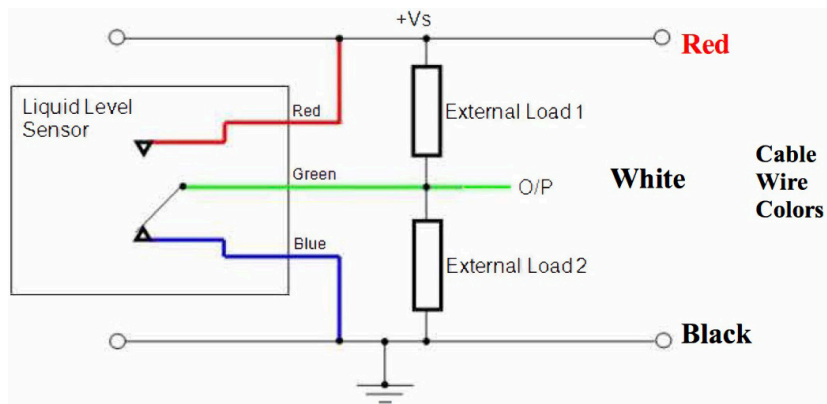


Additional reverse protection diode recommended when switching larger relays or inductive loads to protect the sensor from spikes!

Push - Pull High in Air - Equivalent Circuit



Push - Pull Low in Air - Equivalent Circuit



## Sensor Reference Information

# Optical Level Sensor Application Notes

### Sensor Cleaning and Compatibility

Clean with alcohol or Freon based solvents. DO NOT use chlorinated solvents such as trichlorethane which can affect the sensor surface. Check chemical compatibility chart before fluid installation.

### POLYSULPHONE

The list below may be used as a guide and gives common industrial fluids that are typically compatible with polysulphone. We recommend that before use you should test that the fluid you wish to use this device in is compatible with polysulphone.

Acetic acid - Glacial	Diesel fuel	Methanol
Acetic acid - 10%	Diethylamine	Motor oil
Ammonia - 88	Diethyl Ether	Nitric acid 10%
Ammonium Hydroxide - 10%	Diocyl Phthalate	Oils - Vegetable
Ammonium Chloride - 10%	Edible fats & oils	Oxalic acid
Aviation spirit	Ethanol 50%	Petroleum Ether
Benzene	Ethyl Alcohol	Potassium Hydroxide 10%
Benzoic acid	Ethylene Glycol	Potassium Hydroxide 50%
Bleach	Ferric Chloride	Silicone fluids
Brine	Formaldehyde	Silver Nitrate
Butane	Formic acid	Soap solution
Calcium Nitrate	Glycerol	Sodium Chloride
Calcium Hypochlorite	Heptane	Sodium Hydroxide 10%
Carbon Tetrachloride	Hydrochloric acid 10%	Sodium Hydroxide 50%
Chromic acid	Hydrogen Peroxide	Sulphuric acid 10%
Copper Sulphate	Isopropanol	Transformer oil
Creosote	Iso-Octane	Turpentine
Cyclohexane	Kerosene	Varnish
Cyclohexanol	Linseed oil	Water
Detergent solutions	Magnesium Sulphate	White Spirit

## Sensor Reference Information

# Optical Level Sensor Application Notes

### TROGAMID

The list below may be used as a guide and gives common industrial fluids that are typically compatible with trogamid. We recommend that before use you should test that the fluid you wish to use this device in is compatible with trogamid.

Acetone  
Benzene  
Break Free (lubricating oil)  
Carbon tetrachloride  
Diesel fuel  
Econa PG32 (Hydraulic fluid)  
Ethanol  
Ethyl acetate  
Eucalyptus oil  
Formaldehyde solution  
Glycerine (DAB6)  
Heating oil  
Isopropanol  
Methanol  
Mountain pine oil  
Petroleum ether  
Potassium hydroxide (25 w/w-%)  
Potassium hydroxide (50 w/w-%)  
Premium gasoline  
1,2-propane dial  
Regular gas  
Test fuel (M15)

